

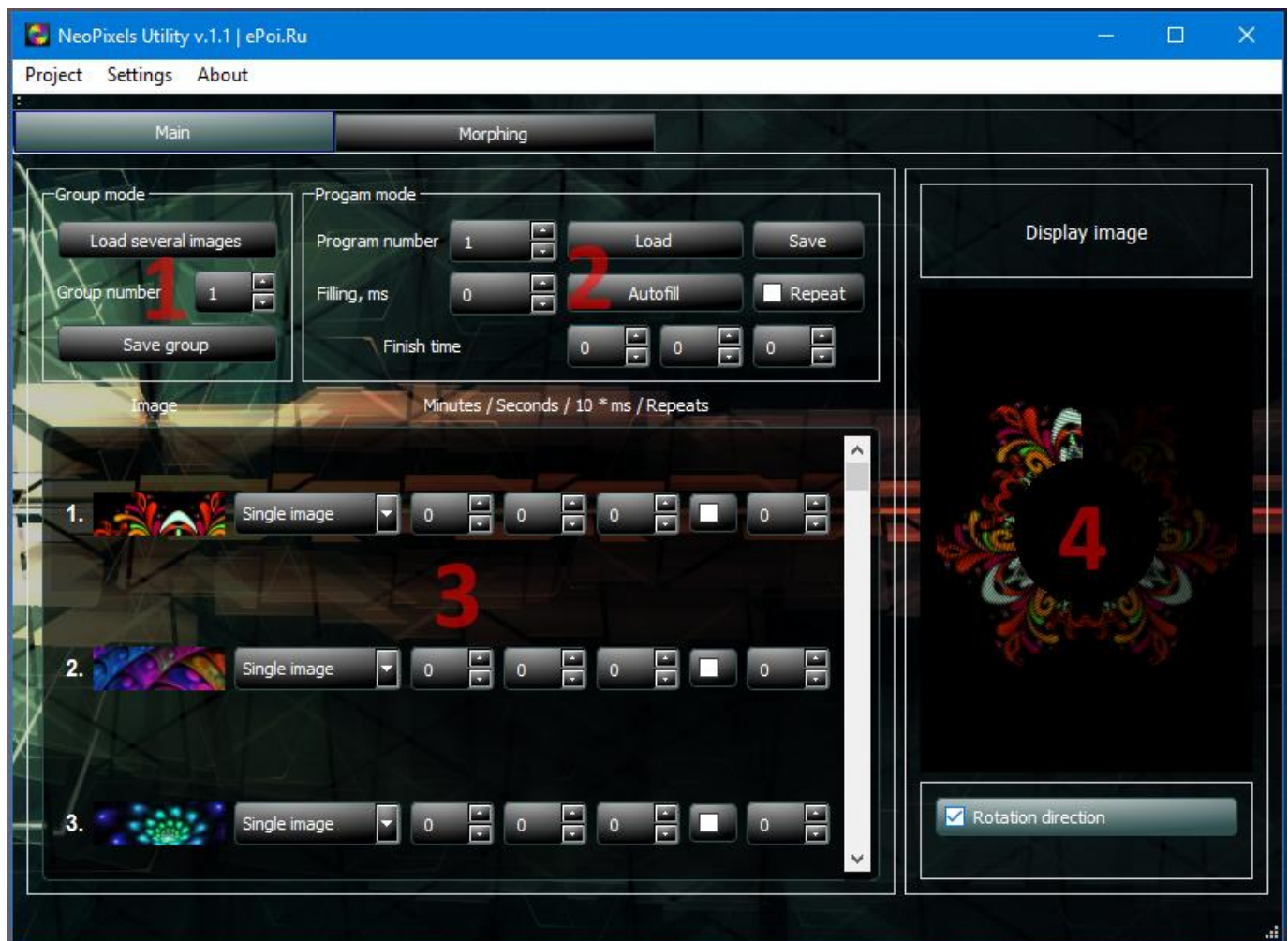
## I. Basic functionality and features

Download the latest version for Windows - <http://e-poi.ru/NPU2.zip>

We've done our best to make easy-to-use software for an average PC user and the purpose of this manual is to answer some questions and provide real examples. If our manual does not contain the information you are looking for and you still have questions – please contact our customer support service: [pixel@epoi.ru](mailto:pixel@epoi.ru)

3 clicks to change language, screenshot: <http://e-poi.ru/language.png>

**Tabs in the upper part of the screen:** You need the “Main” tab to work with image sequences. The “Morphing” tab is now under development.



### Overview:

**The first area 1 “Group mode”** – bulk modes loading or folder saving with the consequence of single modes without timing, i.e. just modes.

**The second area 2 “Program mode”** – uploading of a ready image sequence and its edition, autofill of the time interval and saving.

**The third area 3** – for sorting images positions in folder with group of single images. Uploading single images. Timeline settings for sequence.

**The fourth area 4** – images preview.

Modes groups or image sequences saved in those two areas are uploaded directly to the pixel poi or to your PC for further manual transfer. You can make minor adjustments manually by opening program.txt file in the root of the sequence folder «xx\_prog», where “xx” is number of folder.

## Uploading images.



To upload an image one needs to select the area with the order number in the window **3** and click it or drag the image there with mouse. Position of images can be changed by dragging them with left mouse button pressed.

You can upload several images after selecting a folder. To do that you need to choose “Load several images” in the window **1** and then select the images folder on your PC. All images in the selected folder should have the proper file format.

Timing in the format of playback intervals is adjusted in the window **3** to the right of images.

## Examples of creating image sequences in the software.

**Important!** The time in the timelines is zero set meaning that the 1<sup>st</sup> mode always starts from 00 00 00 and the interval between 1<sup>st</sup> mode start and 2<sup>nd</sup> mode start is equal to the duration of 1<sup>st</sup> mode playback.

**An example of setting:** We need the 1<sup>st</sup> mode to be played for 20 sec., therefore we need to set 00 00 00 time in the 1<sup>st</sup> mode and 20 sec. time in the 2<sup>nd</sup> mode. In this case the 1<sup>st</sup> mode will be playing for 20 seconds before the 2<sup>nd</sup> mode starts. If you set the 3<sup>rd</sup> mode, for instance 50 sec., then the 2<sup>nd</sup> mode will be playing for 30 sec. only (i.e. it's the 30 seconds interval between 20 and 50 sec.) etc.

## Autofill of playback interval. Example.

**Task:** We need 30 modes switching on consequently every 10 sec.

**Solution:** There is the “Group mode” window in the upper part of the program screen. We need to go there, click “Load several images” and specify the folder with your 30 modes. Or we can add all needed modes one by one manually in the desired sequence to the main window **3** with modes. Then we will need to sort modes and put them in the appropriate order. After it we need to go to the window **2** at the top and enter milliseconds in the “Filling” box – in our example we enter 10 000 and click “autofill”. The 10 second interval of automatic playback will get filled.

In the next step we fill the “finish time” box. We check the value of the last mode – for example, 1 50 0 – add 10 sec. and enter the end time (in this case it's 1 60 0). If we need to play a sequence once again after it finishes we should check the “repeat” box and we don't need that we don't have to check anything – pixel poi will go off. The last step before saving the results is to set the “program number”. We need a unique order number of the folder in the pixel poi where our sequence will be saved. We need to click “save”, choose the path - we can save it right to the pixel poi by connecting it one after another or to the PC with subsequent uploading of the image sequence.

Best wishes for your show! Make it unforgettable!